



# Lesson 1.3

## MPKI Structure & Roles

# Content

- UN Peacekeeping-Intelligence (PKI) structures
- MPKI roles and responsibilities

# Learning Outcomes

- Explain UN PKI structures, roles and responsibilities
- Explain UN MPKI structures, roles and responsibilities

# UN PKI Structure

- Strategic Peacekeeping-Intelligence (SPKI)
- Operational Peacekeeping-Intelligence (OPKI)
- Tactical Peacekeeping-Intelligence (TPKI)

# SPKI Structure

- Department of Peace Operations (DPO)
  - Current Military Operations Service (CMOS)
  - Assessment Team (AT)
- Department of Safety and Security (DSS)
  - Threat and Risk Assessment Service (TRAS)
- DPO and DPPA
  - Single Regional Structures (SRS)
- Office of USG for Peace Operations
  - Peacekeeping-Intelligence Coordination Team (PICT)
- United Nations Operations and Crisis Centre (UNOCC)

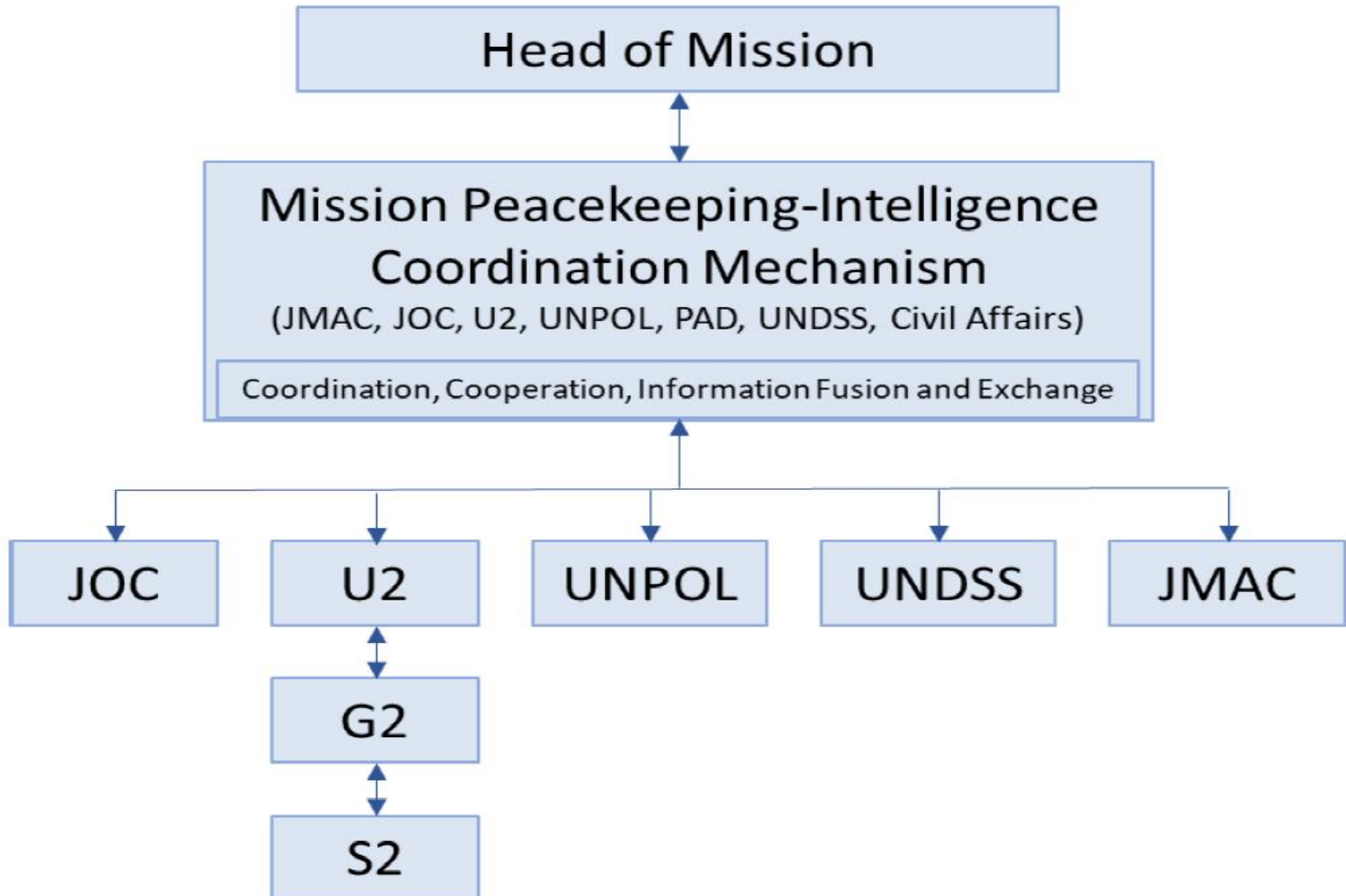
# OPKI Structure

- Joint Mission Analysis Centre (JMAC)
- Joint Operations Centre (JOC)
- FHQ MPKI Cell (U2)
- Crime Peacekeeping-Intelligence Unit (CPKIU).
- Chief Security Advisor (CSA)
- Other Entities

# OPKI Management Mechanisms

- Mission Peacekeeping-Intelligence Coordination Mechanism (MICM)
- Additional networks
- Key persons

# MICM Organization





# UN PKI Management Mechanisms

- Mission Peacekeeping-Intelligence Coordination Mechanism (MICM): JMAC, JOC, UNDSS, U2, UNPOL and other entities
- Additional networks: IOs, NGOs, Host State's intelligence structures
- Key persons: SRSG, DSRSG, HoMC (FC), HoPC (PC)

# TPKI Structure

- Supports UN tactical-level commanders
- Feeds local PKI up the chain to inform operational & strategic PKI picture
- For MPKI, relates to G2 Sector and S2 Battalion levels
- Likely to be similar representation from police and other mission components

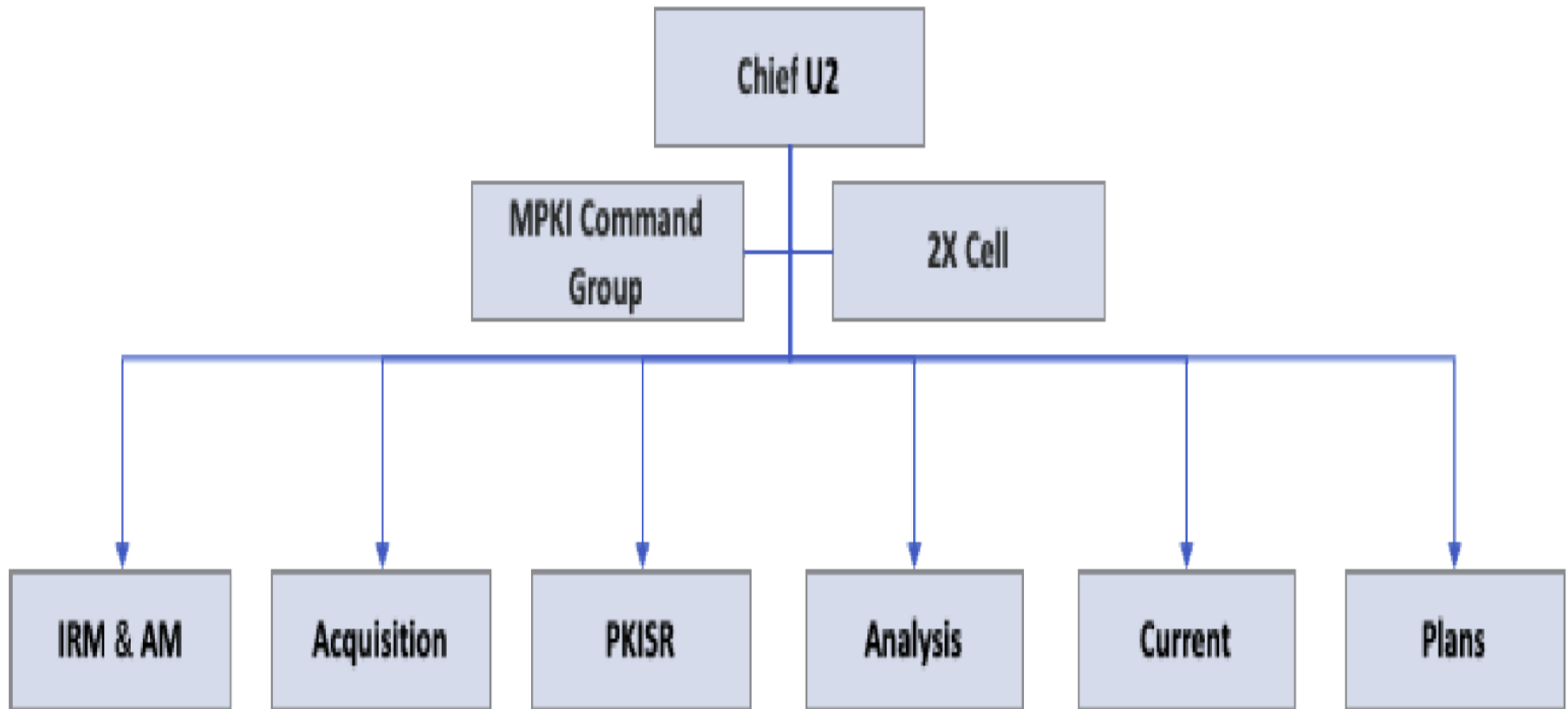
# UN MPKI Structures, Roles And Responsibilities

- Establishes MPKI architecture
- Additional MPKI elements

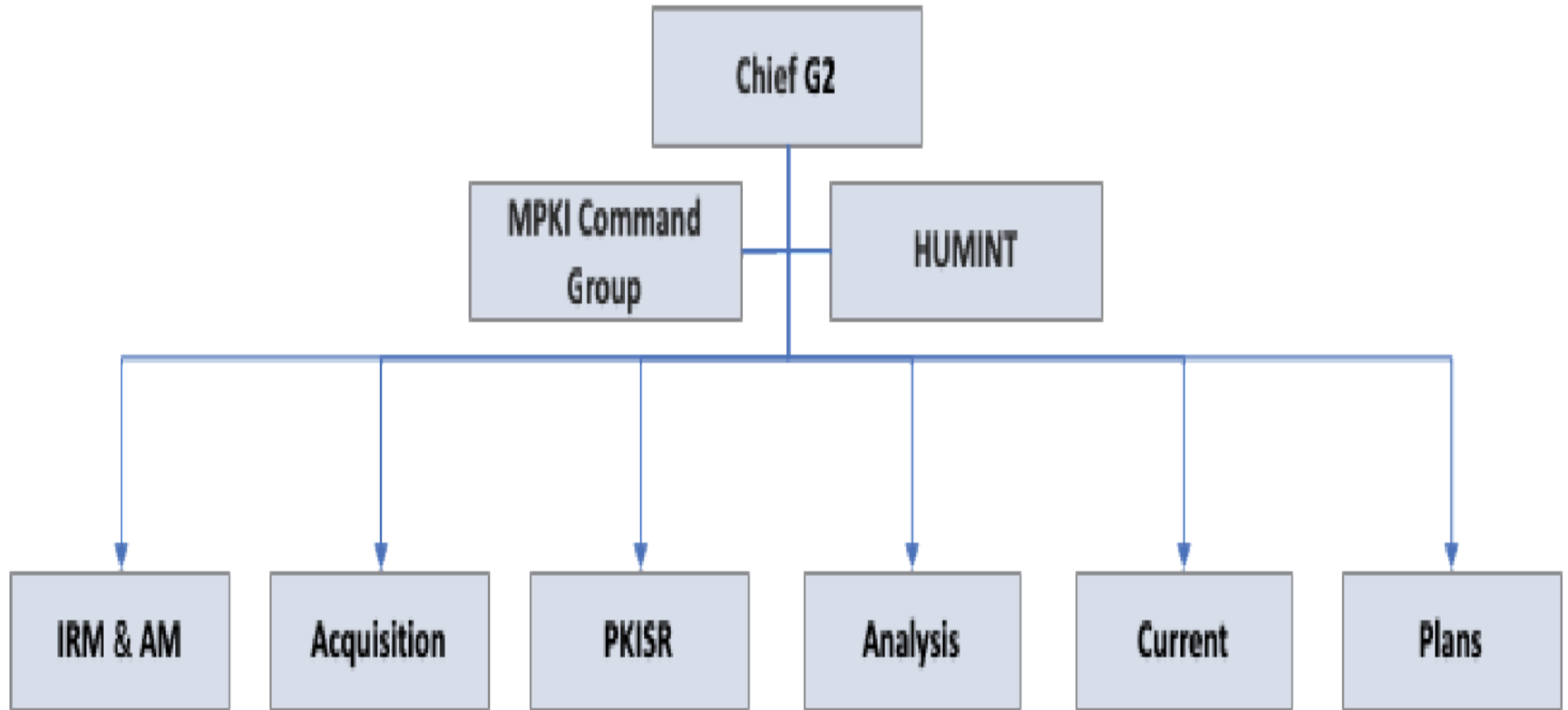
# Establishing MPKI Architecture

- Force HQ PKI Branch (U2)
- Sector HQ PKI Branch (G2)
- Battalion HQ PKI Section (S2)
- Company HQ PKI Support Team (COIST)

# U2 Branch Structure



# G2 Branch Structure



# U2/G2 Branch Roles/Responsibilities

- Manages MPKI Cycle - direction, acquisition, analysis, dissemination
- Information acquisition activities are conducted to support mission / force IRs
- Appropriate acquisition assets are tasked to acquire relevant information
- Incoming information is collated on a central database, and available to relevant personnel

# U2/G2 Branch Roles/Responsibilities

- Maintains source registry
- Produces timely, relevant, concise, predictive intelligence
- Identifies trends
- Ensure Peacekeeping-intelligence Estimate (PIE) are complete / current
- Supports operations with Short Peacekeeping-Intelligence Estimates (SPIE)



# U2/G2 Branch Roles/Responsibilities

- Conducts AOE and actor analysis
- Ensure a gender and protection perspective in peacekeeping-intelligence products
- Timely Intelligence provided to higher / subordinate HQs
- Represents the military component at difference levels

# Additional MPKI Elements

- Peacekeeping-Intelligence Surveillance and Reconnaissance (PKISR) Unit
- Military All-Source Information Cell (MASIC)

# MPKI Support to Non-Mission Partners

- A SRSG decision to share MPKI with non-Mission partners
- Bound by UN information and peacekeeping-intelligence protocols

# Take Away

- UN peacekeeping-intelligence structures, roles and responsibilities
- UN MPKI structures, roles and responsibilities

Questions

# LEARNING ACTIVITY

**Type:** Small Group Discussion

**Approx. Time:** 30 minutes

**Exercise:**

Construct a S2 section and explain its roles and responsibilities.

# Suggested S2 Structure

